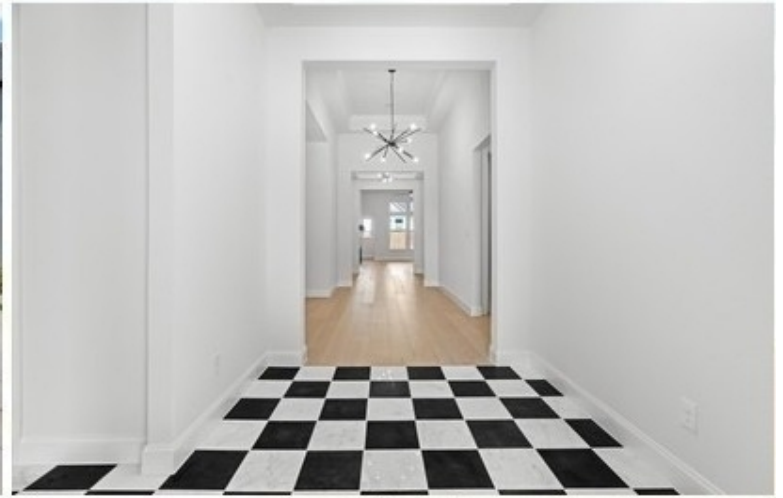


4405 ROSEDALE STREET

Prosper, TX



5 Beds, 3 Baths - 3,260 sq ft - \$899,900

Welcome to this stunning East-facing 5 bedroom, 3 bathroom home in the highly sought after Light Farms community in Celina, Texas. Boasting over 3,200 square feet of thoughtfully designed living space, this energy-efficient home offers a perfect blend of style, comfort, and functionality. Step inside to find luxury wood flooring and fresh, crisp white paint that create a bright and inviting atmosphere throughout. The open concept layout is ideal for everyday living and entertaining, while the dedicated office provides a quiet retreat for remote work or study. Enjoy movie nights in the spacious media room, and prepare meals with ease in the modern kitchen equipped with energy-efficient appliances. Each bedroom offers a generous space with walk-in closets and provides flexibility for growing families or guests. An additional ensuite bedroom that is perfect for an elderly parent, guest, or teenager. Located in the vibrant Light Farms neighborhood where residents enjoy access to resort-sty



Brandon Hays
503.421.2224 Direct
Brandon@TopEquityGroup.com
[cribflyer.com/4405-rosedale-street](https://www.cribflyer.com/4405-rosedale-street)

