

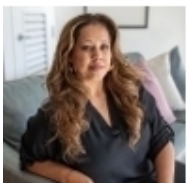
1802 E DONNER DR

Phoenix, AZ



3 Beds, 2 Baths - 1,907 sq ft - \$406,000

Beautifully upgraded home in a gated Baseline Corridor community offering soaring vaulted ceilings, abundant natural light, and a functional open-concept layout. The kitchen features granite countertops, maple cabinetry, and a wraparound breakfast bar perfect for entertaining. The spacious primary suite includes a private balcony, dual sinks, walk-in shower, and generous closet space. Enjoy a low-maintenance backyard with upgraded paver patio ideal for outdoor living. Additional highlights include upstairs laundry, pre-wired surround sound, and a 2-car garage. Conveniently located near freeway access, shopping, dining, and Phoenix mountain preserves.



Laura Roman
602-513-9337
lroman.sell saz@gmail.com
dynamiteclient.com/1802-e-donner-dr

