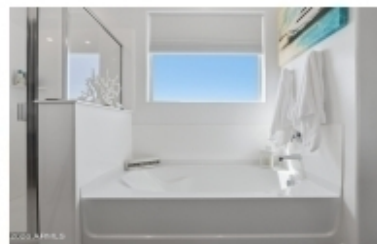
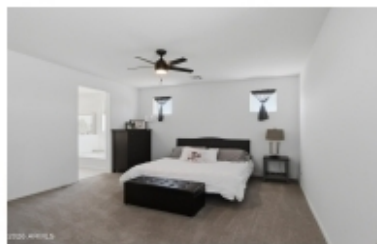


7413 W ROVEY AVENUE, GLENDALE

New Construction Without the Wait in Glendale! Built in 2025, this energy-efficient 3-bedroom, 2.5-bath home offers approximately 2,301 square feet of thoughtfully designed living space. Featuring advanced construction techniques, foam insulation, upgraded 36-inch cabinetry, a large granite island, tile flooring, an oversized loft, spacious bedrooms with walk-in closets, and an RV gate, this move-in-ready home blends modern comfort with everyday functionality. Conveniently located near shopping, dining, entertainment, and the Westgate area, this home offers the perfect balance of lifestyle and convenience. Listed at approximately \$524,990.



Efrain Verduzco
480-244-9293
efrainmyrealtor@gmail.com
bethanygrove.com

 **BARRETT**
REAL ESTATE