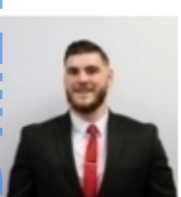
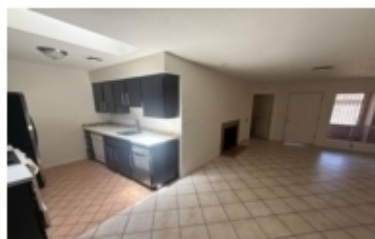


PD4ML DEMO MODE PD4ML DEMO PD4ML DEMO MODE PD4ML DEMO PD4ML DEMO

## 4820 N 89TH AVE, UNIT 42, PHOENIX

Discover comfortable Phoenix living in this charming 2-bedroom, 2-bath townhouse featuring dual primary-style suites, each with a private bathroom and shower. The bright open floor plan offers abundant natural light, a desirable split-bedroom layout, tile flooring throughout, inside laundry, and a cozy fireplace. The primary suite opens to a private covered patio with beautiful Saltillo tile, creating the perfect space to relax and enjoy Arizona's outdoor lifestyle. Residents also enjoy access to a sparkling community pool. Ideally located just minutes from State Farm Stadium, Westgate Entertainment District, Desert Diamond Arena, shopping, dining, and major freeway access, this low-maintenance home combines comfort, convenience, and an unbeatable Phoenix location.



Blaine Pinkman  
623-759-0152  
blaine@azrentals.com  
[dynamiteclient.com/4820-n-89th-ave-unit-42](http://dynamiteclient.com/4820-n-89th-ave-unit-42)



PD4ML DEMO MODE PD4ML DEMO PD4ML DEMO MODE PD4ML DEMO PD4ML DEMO