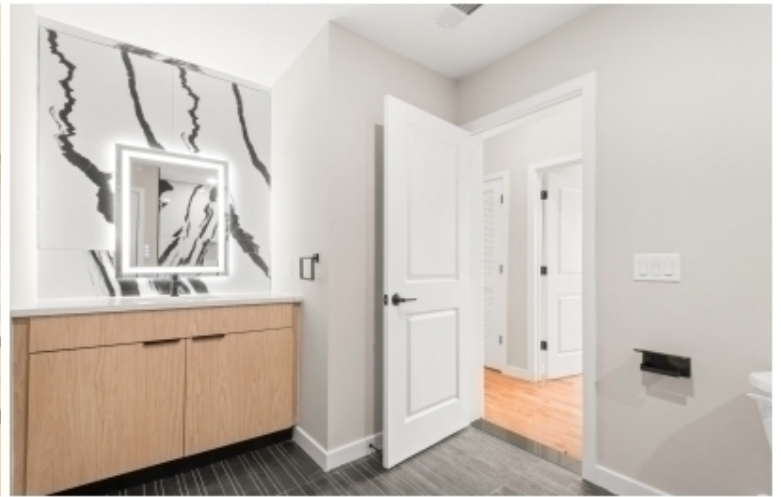


108 FLEMING AVENUE

Newark, NJ



7 Beds, 7 Baths - 6,000 sq ft - \$2,100,000

Welcome to this brand-new luxury 4-family corner propertyan exceptional blend of style, income potential, and prime location in Newark's Ironbound District. Featuring 7 bedrooms, 7 full baths, 3-car parking, and a rooftop deck with stunning city views. Each unit showcases GE Profile appliances, quartz countertops, premium tile, and matte black finishes for a sleek modern look. Steps from transit, dining, and shoppingthis turnkey opportunity delivers strong rental income, high-end living, and lasting value.



Reisha Baker - Broker Owner
551-998-8483
reisha@skyrealtyintl.com
108fleming.com

